

DinaBoost®

PRODUCT SPECIFICATIONS

COLOR AMBER FREE
FLOWING LIQUID

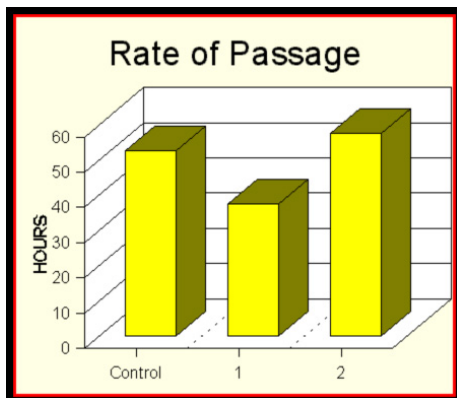
PACKAGING One, Five, Ten,
Twenty, 210 and
1000 liter plastic
containers

STORAGE Cool dry location.
Keep away from
direct exposure to
sunlight

USE DIRECTIONS

Top-dress **DINABOOST®** on late gesta-
tion and lactation diets at the rate of 250-
500 grams/hd./day.

For best results store **DINABOOST®**
at 35 degrees C°, (95F°)



GUARANTEED ANALYSIS



ANALYSIS

CRUDE FAT 100%

INGREDIENTS LIST:

TOTAL FATTY ACIDS (MIN) 90%
FREE FATTY ACIDS (MAX) 20%
UNSATURATED MATTER (MAX) 2.5%
INSOLUBLE IMPURITIES (MAX) 1.0%
MOISTURE (MAX) 1.0%

Blended vegetable fats, stabilized with
BHA and BHT, artificial flavors and flavor
enhancers, and organic acids.

Use Recommendations

Lactation Rations 30-38 kg./ton
Gestation Rations 10-18 kg./ton
Pig Starter Diet 30-35 kg./ton
Pig Grower Diet 10-18 kg./ton
Starter Feed Pigs 18-30 kg./ton
Pig Finisher Diet 5-10 kg./ton
Dust Control 7.5-10 kg./ton

Top-dress **DINABOOST®** on late gestation and
lactation diets at the rate of 250-500 grams/hd./
day.

For best results store **DINABOOST®** at 35
degrees C°, (95F°)



Diversified Nutri-Agri Technologies Inc.,
130-C John Morrow Parkway 220, Gainesville, Georgia 30501
E-Mail info@dinatec.com, Visit our web site at
<http://www.dinatec.com>
Phone 770-531-1309, FAX # 770- 234-6283 or 770-532-9203TOLL
FREE 888-DINATEC (888-346-2832)

We Deliver Optimum Profitability and Performance



DinaBoost®

A highly digestible liquid en-
ergy source blended with ar-
omatic flavor enhancers and feed
stabilizers.

Influence of Added Energy Sources in Nursery Pig Performances

Comparative Results	Control	3% Added Soy Oil	3% Added DinaBoost
Start Wt.	18.68	19.80	19.10
44 day end wt.	62.42	65.42	70.00
Gain	43.74	5.34	5.36
ADG	0.99	169.8	172.3
F.C.	1.99	388.0	358.0
Add. energy cost	NONE	2.28	2.07
Feed Saved		1.06	0.88
Extra pig		+3 lbs.	+7 lbs.